

Build-a-Boot™ Offloading Heel Protector

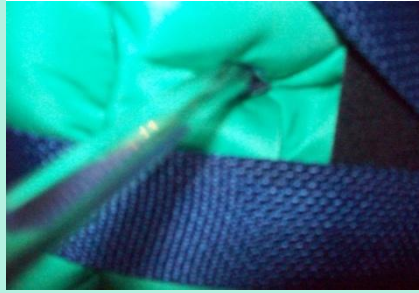
The Build-a-Boot Offloading Heel Protector is a systematic treatment to offload (“float”) the heels of non-ambulating patients in order to reduce the risk of heel pressure ulcers.

Application Instructions

- 1** Place heel in hole (NOTE: it may be helpful to bend the patient’s knee slightly).



- 2** If also using a compression device, route tubing through port hole, ensuring that tubing neither kinks nor is in contact with patient’s skin.



- 3** Tighten black straps for a snug fit, but do not over-tighten such that blood flow is restricted.



- 4** Place foot in neutral or slight dorsiflexion and secure foot positioning straps.



- 5** Feel underneath to make sure the patient’s heel is floated. If not, undo straps and re-apply.



Sizing check:

- ✓ If heel touches bed, use bariatric size
- ✓ If straps touch shin, use bariatric size
- ✓ If snug fit not possible, use small size

- Use only on non-ambulating patients. Do not allow patient to walk or stand while wearing "Build-A-Boot"
- Remove Build-a-Boot periodically to inspect patient’s skin
- Report any pain, swelling, changes in sensation, or unusual reactions to a clinician
- Do not use without the order or supervision of a licensed clinical practitioner

CAUTION: DO NOT WALK OR STAND IN BUILD-A-BOOT!

Cleaning:

Build-a-Boot can be wiped down with most disinfectant wipes. It can also be cleaned via Washing Instructions below.

Washing Instructions:

Build-a-Boot can be washed in any commercial washer using standard detergent. Do not exceed temperature of 70 degrees centigrade or 160 degrees Fahrenheit. DO NOT BLEACH. Build-a-Boot can be air-dried or dried in dryer subject to temperature restrictions above.

CAUTION:

Federal law (USA) restricts this device to sale by or on the order of a practitioner licensed by applicable law to use or order the use of this device.

WARNING:

This product should be used under strict supervision of a medical professional. Do not attach Build-a-Boot so tightly as to compromise circulation. Incidents of pain, swelling, changes in sensation, or unusual reactions should be reported to a clinician.

The manufacturer shall not be liable for any loss, damage, expense, or injury arising from the use of this product. All PRIMO products are warranted for ninety (90) days from the date of shipment as to product quality and workmanship. Any defective product will, at the option of PRIMO, Inc., be repaired or replaced.